

# WHITLEY MANUFACTURING

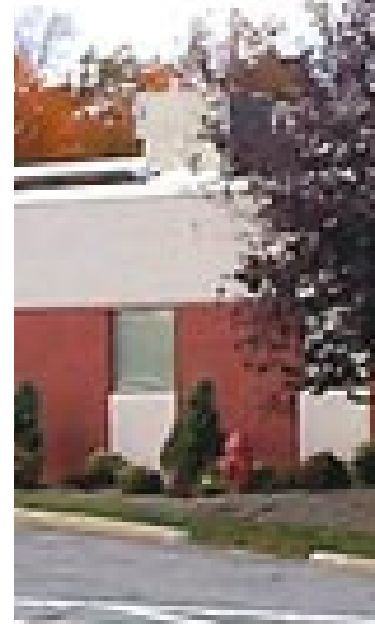


CASE STUDIES • MEDICAL



**FOR:** Geauga Hospital  
**TYPE:** Hospital Expansion  
**WITH:** MedBuild (Modspace)

Founded in 1952 and beginning formal operations in 1959, Geauga Regional Hospital is a 226-bed, non-profit acute care facility providing a full range of services to residents in Geauga, Ashtabula, Cuyahoga, Lake, Portage, and Trumbull counties in Northeast Ohio. The hospital's parent system includes a broad spectrum of health services and providers.





**WHITLEY  
MEDICAL**

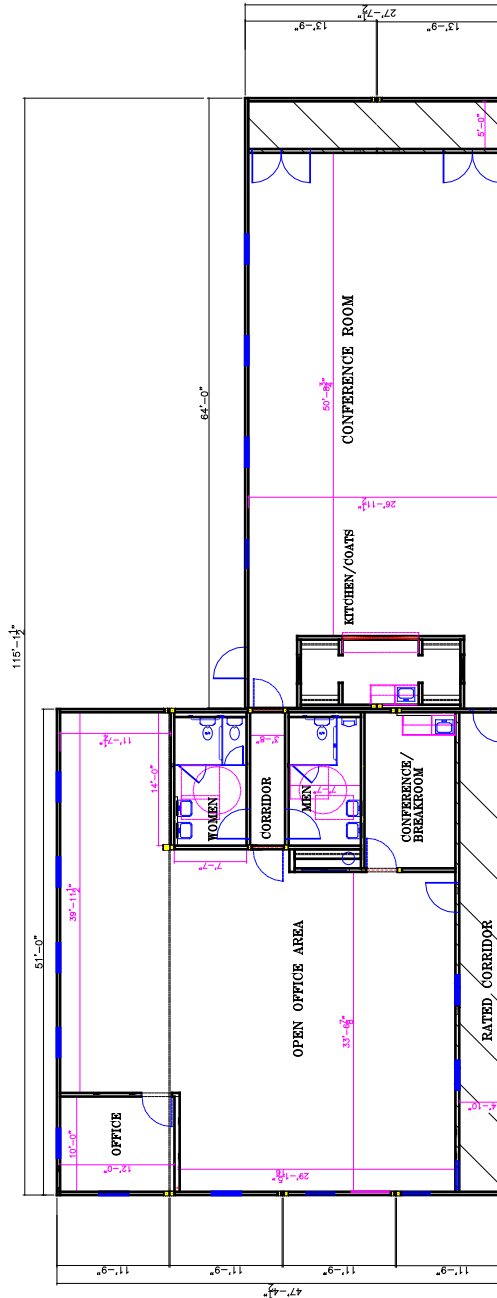
- Dialysis
- MRI
- Hospital
- Clinic
- Medical Office
- Dental

# THEIR NEED

Geauga was growing fast and needed to attract and hold increasingly skilled specialists. Their critical need was for office space and a conference center to support their patient care operations. Due to their location in a densely populated area, Geauga needed to “shoe horn” the new facility into a small space between two other buildings. And the budget was as tight as the space.

# OUR SOLUTION

Geauga chose Medbuild, a modular distributor specializing in healthcare facilities. The project became another in a series of collaborations between Whitley and Medbuild. The result was a 5,000 square foot office complex with conference facilities linked through fire-rated corridors to the surrounding wings of the existing hospital. The total construction period was approximately 140 days and provided a site plan that saved existing trees and landscaping - and was constructed off-site, minimizing disruption to patients.



M E D I C A L

**Whitley Mfg. Co., Inc.**  
 201 W. First St.  
 So. Whitley, IN 46787  
 (260) 723-5131  
 www.whitleyman.com



- South Whitley, IN
- Rochester, IN
- Marysville, WA

Polain