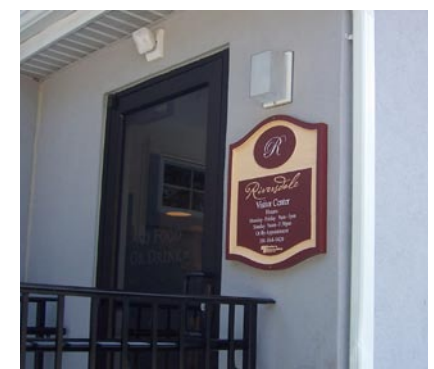
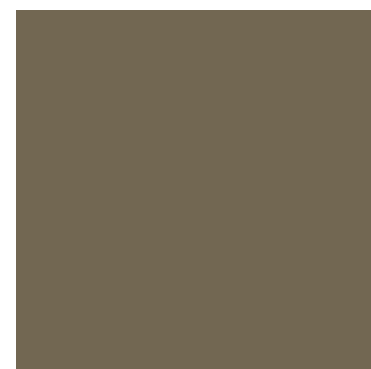


# WHITLEY MANUFACTURING



**FOR:** Maryland Parks Department  
**TYPE:** Visitor's Center  
**WITH:** Modular Genius

Riversdale, a National Historic Landmark, is a restored, five-part, stucco-covered brick plantation home built between 1801 and 1807 just outside Washington D.C. The home is a prime example of Neo-Palladian architecture. It was built for Belgian emigre Henri Stier and was, for a time, the repository of the family's collection of Old World master paintings. (National Parks Service)



# WHITLEY CLUBHOUSE

- Golf course
- Pro shop
- Dining / Bar Facilities
- Member's Lounge
- Office Space
- ADA Restroom Facilities
- Visitor's Center



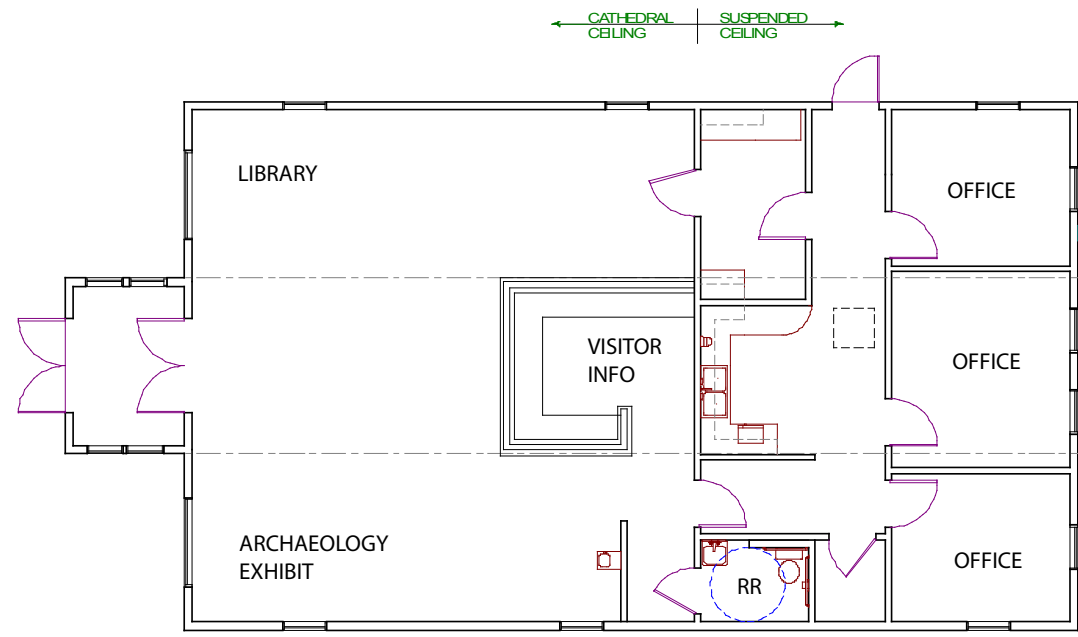
## THEIR NEED

The Riversdale home itself has been lovingly restored to its original grandeur. Unfortunately, the Visitor's Center had become an embarrassment. It was much too small to facilitate tour groups, staff, archives and other essentials.

As a National Historic Landmark, the construction of the new Visitor's Center needed to disrupt and damage the site as little as possible. The other major factor was the aesthetics: the building needed to complement the style of Riversdale itself. Further, disruption and traffic at the site needed to be minimal;

## OUR SOLUTION

Whitley Manufacturing took on the task of constructing the Visitor's Center; taking design cues from Neo-Palladian architecture. The clerestory center allows natural daylighting and was prefabricated as well. In less than six months, the new Visitor's Center was complete. The building is an attractive, complimenting piece to the historic mansion itself. With accelerated construction taking place off-site, the disruption to the site and damage to the historic area was minimal. To keep operating costs low, high efficiency HVAC and extra insulation were added.



**CLUBHOUSE**

**Whitley Mfg. Co., Inc.**  
 201 W. First St.  
 So. Whitley, IN 46787  
**(260) 723-5131**  
[www.whitleyman.com](http://www.whitleyman.com)

- South Whitley, IN
- Rochester, IN
- Marysville, WA