



*RAD Technology Medical Systems delivers revolutionary, proprietary technology for radiation shielding applications. The Temporary Radiotherapy Vault (TRV) concept was developed to enable Radiation Oncology departments and practices to continue to treat patients while upgrading their Linear Accelerator or renovating their vaults. The TRV can be used as a 3 to 6 month solution.*

# CASE STUDY

## TEMPORARY RADIOTHERAPY VAULT (TRV)

### KEY ACHIEVEMENTS

*45 Days to complete facility*

*The building features modern, professional aesthetics*

*Meets health, state & local code specifications*

*25% more efficient HVAC system*

*Complex & technical systems installed and tested at Whitley facility*

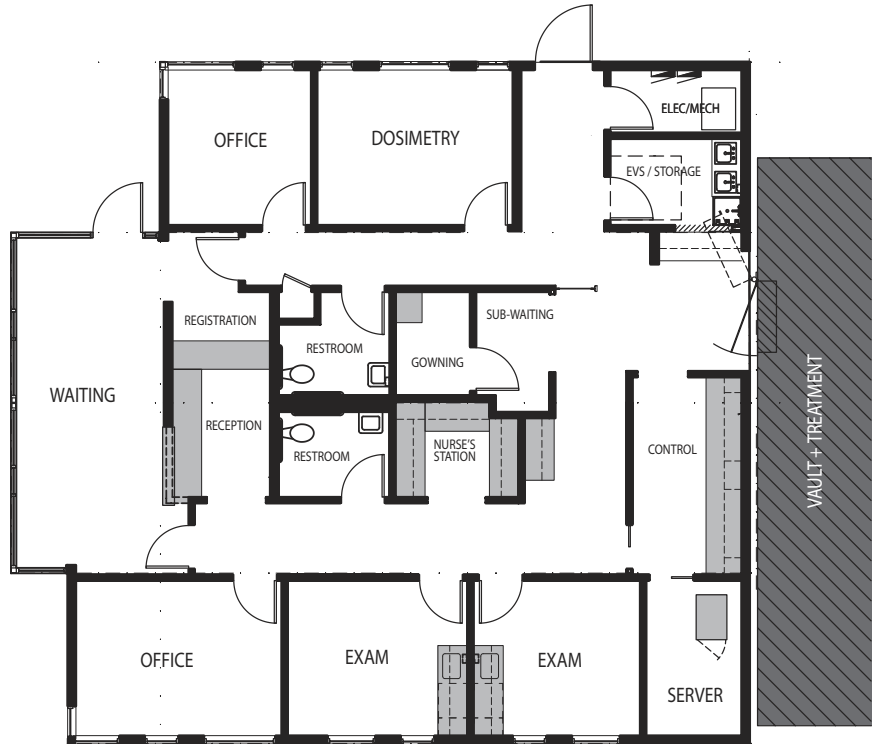
*Less material waste and environmental impact than conventional building*

**R**AD selected Whitley Manufacturing for the construction of their TRV vault and clinic space. Placing a vault with a pre-commissioned linear accelerator and clinical space on-site in a matter of days was going to be challenging. In addition, the TRV is designed for short-term applications and needed to be relocatable.

RAD's specialty foundation system requires no slab, saving millions of pounds of concrete. The TRV is composed of four primary modules (built off-site by Whitley Mfg.) which are transported to the project site and quickly set in place. Prefabricated supporting structures are placed atop the primary modules allowing finishing and equipment installation to take place.

The exterior has a modern, clean look with a gleaming aluminum composite panel (ACM) wall cladding system. The interior features a graceful, curving reception area with material selections and color palettes imparting a theme of soothing natural tones. Interior materials were selected for their suitability in the health care environment and are resistant to mold, mildew, and bacterial growth.

# RAD Temporary Radiotherapy Vault



Typical Floor Plan

## KEY FACTS

**PROJECT NAME**  
RAD TEMPORARY/RELOCATABLE  
RADIO THERAPY VAULT

**LOCATION**  
RELOCATABLE

**PARTNER**  
RAD TECHNOLOGY

**PROJECT TYPE**  
RELOCATABLE VAULT + CLINIC

**BUILDING SIZE:**  
1,600 SQ. FT.

**BUILDING UNITS:**  
4 MODULAR UNITS

