



CASE STUDY

A repeat customer of Whitley Manufacturing, Old Redford Academy (ORA) chose to partner again with Innovative Modular Solutions to construct a two-story, masonry-clad addition to their existing permanent modular school.

OLD REDFORD ACADEMY MIDDLE SCHOOL

Custom Modular Classrooms & Buildings

As with all of ORA facilities, the design, finishes and specifications needed to reflect the schools' commitment to excellence, quality, and sustainability. The building is framed with high recycled content steel with cementitious sub-floors poured on-site.

Ceramic and quarry tile wainscot clads the walls in hallways and classrooms with full-height ceramic tiling in the restrooms. A reflective white "cool roof" membrane covers the roof and improves energy efficiency. The highly efficient HVAC system installed features ERV units to recover energy, CO2 sensors, and HCFC-free refrigerants to ensure healthy indoor air. Occupancy sensors are incorporated into the lighting system to reduce energy waste, as well.

KEY ACHIEVEMENTS

MBI
AWARDS OF
DISTINCTION

*Honorable Mention for
Permanent Education
over 10,000 square feet.*

*25% Timeline Reduction: Moved
in months early without sacrificing
quality*

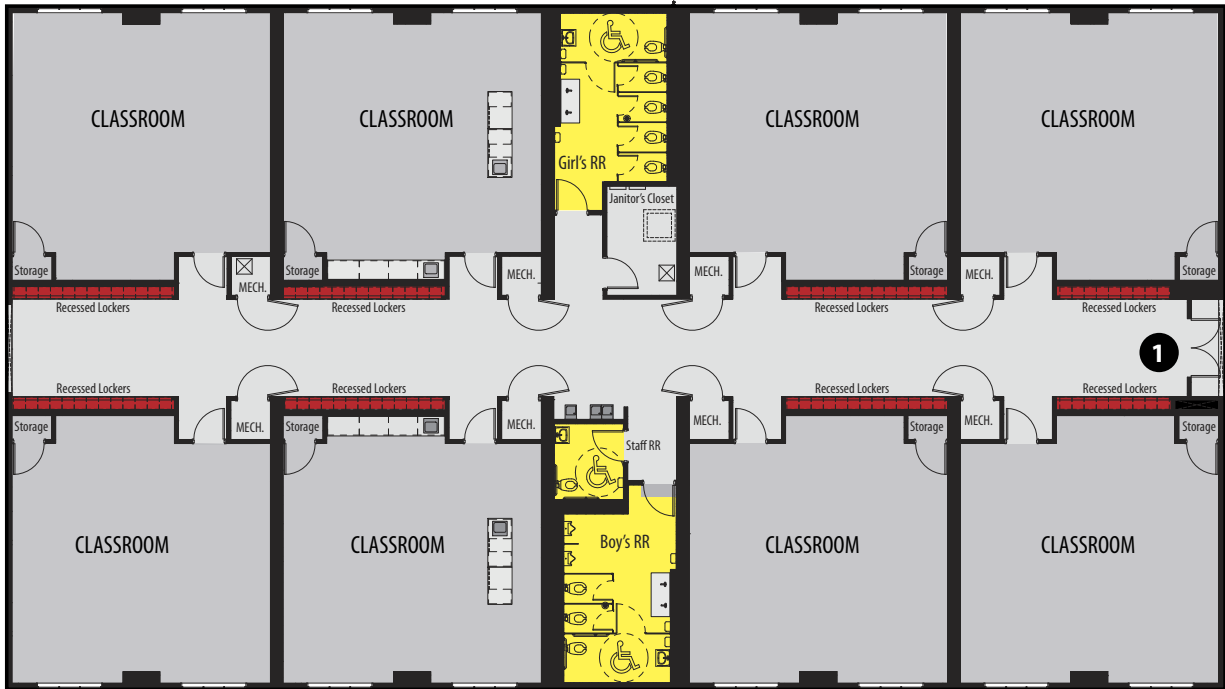
Non-combustible construction

*Energy efficient HVAC systems
with HCFC-free refrigerants*

*Significantly less waste compared
to conventional building*

*Masonry exterior match facade of
adjacent historic building*

Old Redford Academy Middle School



KEY FACTS

PROJECT NAME
OLD REDFORD ACADEMY

LOCATION
DETROIT, MICHIGAN

PARTNERS
INNOVATIVE MODULAR SOLUTIONS
STEVENS ARCHITECTS

PROJECT TYPE
PERMANENT SCHOOL BUILDING
TWO-STORY ADDITION

BUILDING SIZE:
17,640 SQ. FT.

UNITS:
18 BUILDING MODULES

