

# WHITLEY MANUFACTURING

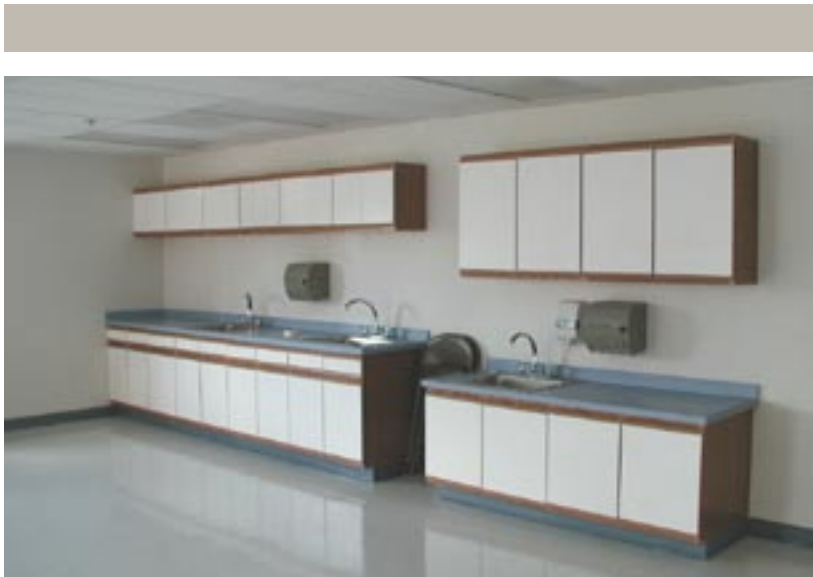


CASE STUDIES • EDUCATION



**FOR:** Skagit Cty. Migrant School  
**TYPE:** School Campus  
**WITH:** Williams-Scotsman

The Washington State Migrant Council is tasked by the state legislature with working on behalf of the tens of thousands of migrant workers who come to Washington annually to harvest, build, and labor in seasonal work.



•relocatable •expansion •permanent  
**whitley**  
 education

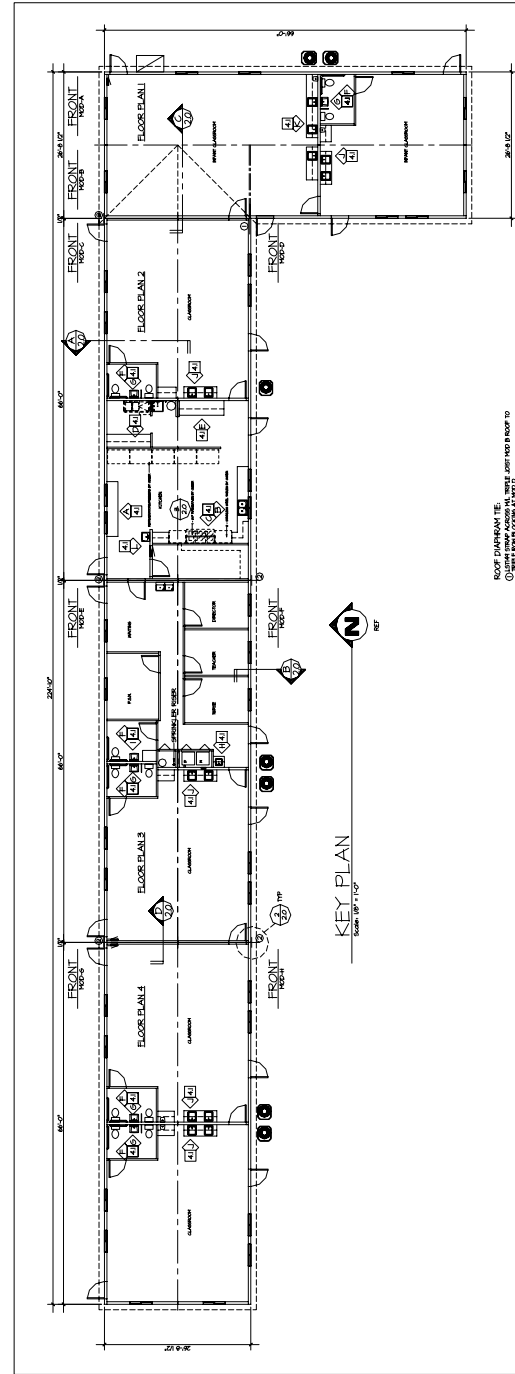
AR

## THEIR NEED

Migrants in the Skagit County area had a variety of camps with a variety of facilities; some were very modern, while some dated back to the 1950's. Additionally, the State felt that a broader range of services should be made available to the migrant workers; not dissimilar to the offerings made to state employees. Amongst these was to be childcare for working families.

## OUR SOLUTION

A 7,000 sft. facility was ordered late in 2003, for construction in 2004. The project's manager & distributor, Williams-Scotsman, coordinated with the Washington government to produce a building that would generally improve the lives of these workers. Modular was chosen for the product as it could be built in an abbreviated time period and was relocatable as the demographic trends changed. A large lunchroom, nurseries, classrooms, playrooms, and administrative offices are all within the series of buildings.



# Plain

This project is a multiple building campus project. One building floor plan is shown here. Contact Whitley Mfg. if you would like a full set of plans.

EDUCATION

**Whitley Mfg. Co., Inc.**  
 201 W. First St.  
 So. Whitley, IN 46787  
 (260) 723-5131  
 www.whitleyman.com



- South Whitley, IN
- Rochester, IN
- Marysville, WA