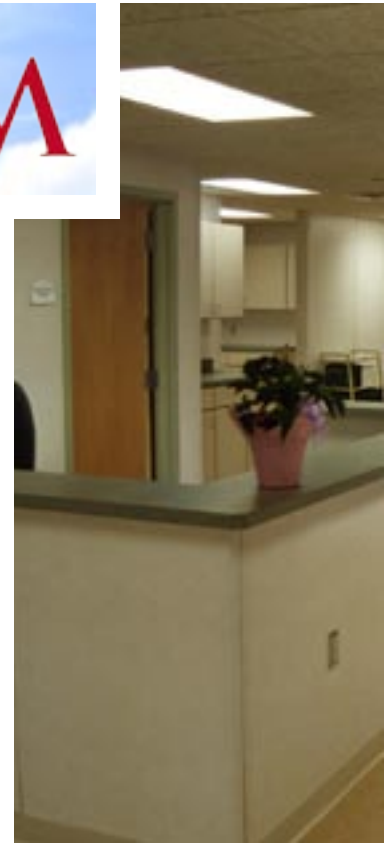


WHITLEY MANUFACTURING



FOR: St. Mary's Hospital
TYPE: Hospital Expansion
WITH: Modspace

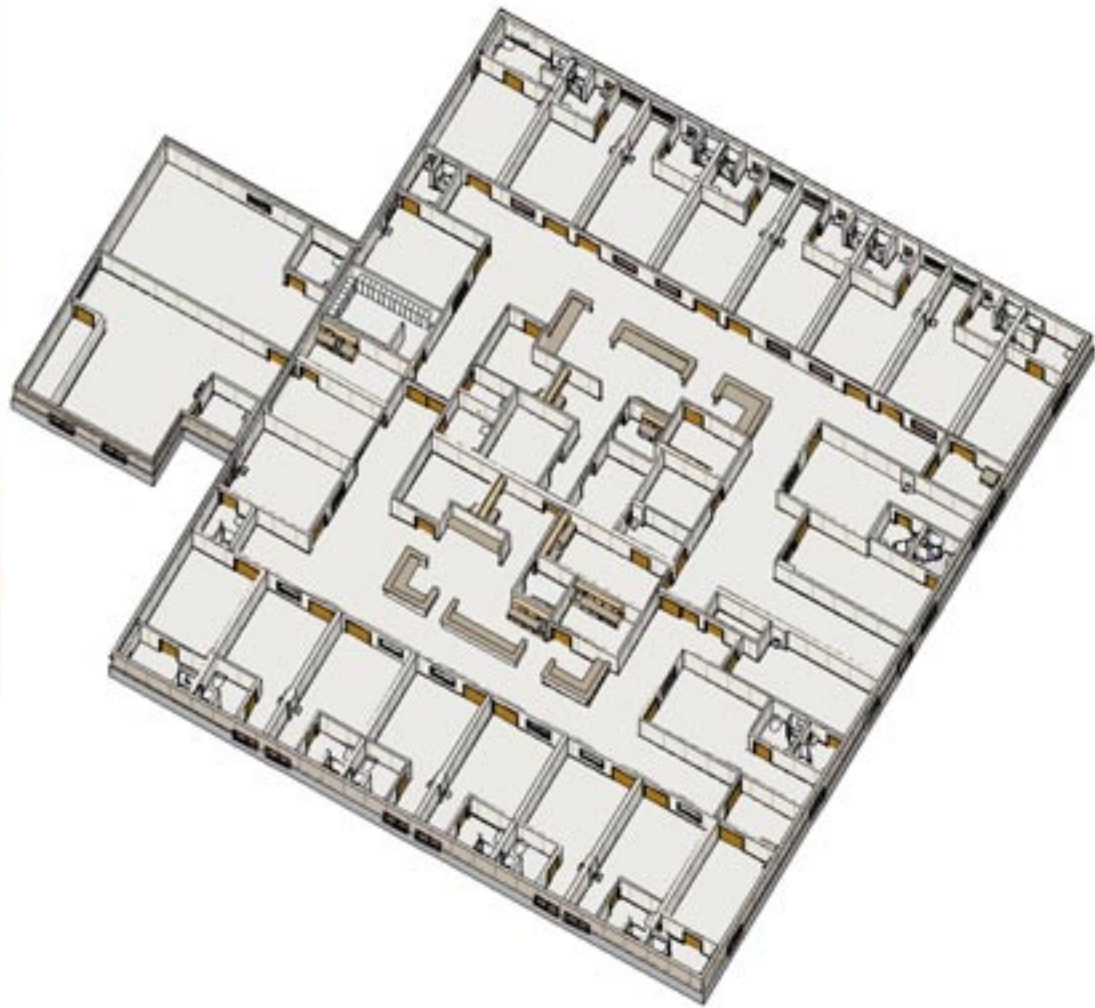
Located on 53 acres in Bucks County, St. Mary is the region's premier healthcare facility. Founded in 1973 by the Sisters of St. Francis of Philadelphia, St. Mary's Medical Center has evolved from a community hospital to the most comprehensive medical center in Bucks County. St. Mary's is a member of a regional Catholic organization that is the second largest healthcare system in the Delaware Valley.





**WHITLEY
MEDICAL**

- Dialysis
- MRI
- Hospital
- Clinic
- Medical Office
- Dental



THEIR NEED

Patient volume had increased by 60% during the previous five years and St. Mary's faced 100% occupancy on in-patient beds almost every day. Their choice: either expand quickly, or turn patients away. The hospital administrators knew that they needed a quick solution, but local contractors estimated a construction timeline of two years for the facility.

OUR SOLUTION

In cooperation with Mod-space (distributor), Whitley supplied 15,000 square feet as a 40-bed permanent expansion wing. The building, comprising 19 pre-engineered components made entirely of steel and concrete (non-combustible type construction), also features isolation rooms, nurse's station, secure medication storage, and storage areas. The full turn-key project took only six months to complete. No patients were turned away.

plan

MEDICAL

Whitley Mfg. Co., Inc.
201 W. First St.
So. Whitley, IN 46787
(260) 723-5131
www.whitleyman.com



- South Whitley, IN
- Rochester, IN
- Marysville, WA