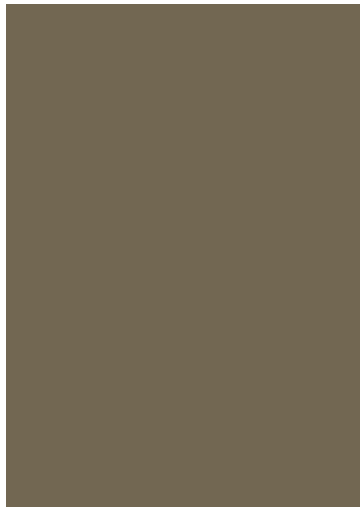
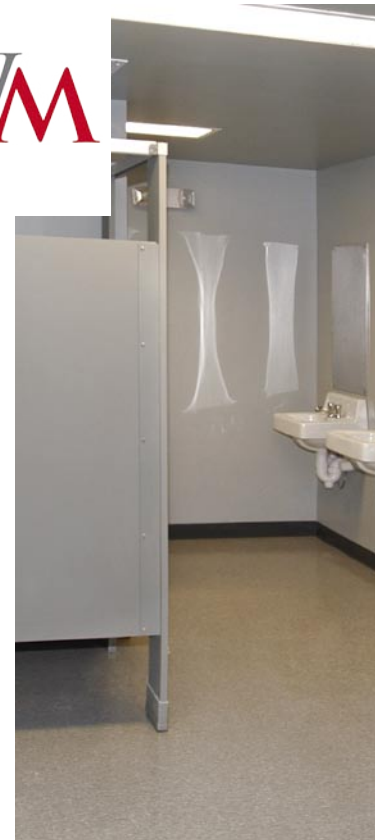


# WHITLEY MANUFACTURING



**FOR:** Buck's County Pennsylvania  
**TYPE:** Detention Facility  
**WITH:** Mobilease Modular

Buck's County is a suburb of Philadelphia with a long and distinguished history. Founded in 1682 by William Penn, the county has grown to over 600,000 residents. The county features a wide variety of famed historical sites.

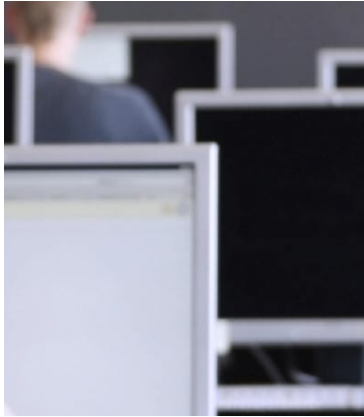


# BUILDINGS FOR CORRECTIONS

## BY WHITLEY MANUFACTURING



www.whitleyman.com



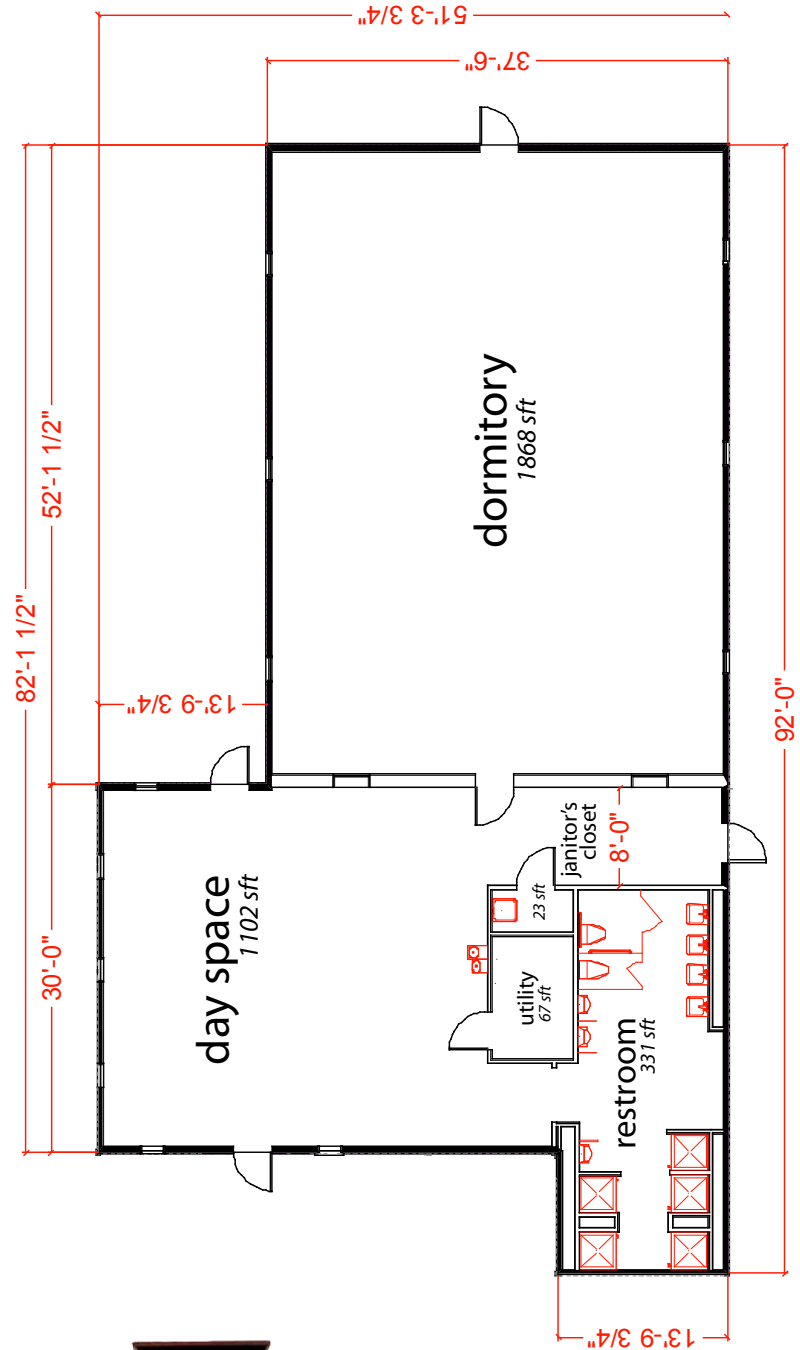
- Temporary Housing Facility
- Police Facilities (holding cells)
- Minimum Security Permanent Buildings
- Maximum Security Permanent Buildings
- Shower / Restroom Facilities
- Expansions to Existing Facilities

## THEIR NEED

Prison overcrowding is a serious problem throughout the nation and Buck's County was no exception. They needed additional medium security space quickly as the existing prison was becoming dangerously overcrowded. Security was a major factor as well. The prison area is a restricted access space, however, a site-built project would require opening access for contractors for the months it would take to complete the project. The County felt that this was an unsafe choice.

## OUR SOLUTION

Mobilease Modular and Whitley Manufacturing designed a building that met all of their needs. The medium security prison will house 48 prisoners and features a wide array of security features. Nearly every surface is reinforced. The core construction of the building features steel framing and lightweight poured concrete floors. An elaborate security system and roof mounted HVAC are controlled remotely from the prison's operations center. The project was completed in just 92 days.



Photography Courtesy of Mobilease Modular.

**2007**  
MODULAR  
BUILDING  
INSTITUTE  
AWARD WINNER



- South Whitley, IN
- Rochester, IN
- Marysville, WA

**Whitley Mfg. Co., Inc.**  
201 W. First St.  
So. Whitley, IN 46787  
(260) 723-5131  
www.whitleyman.com