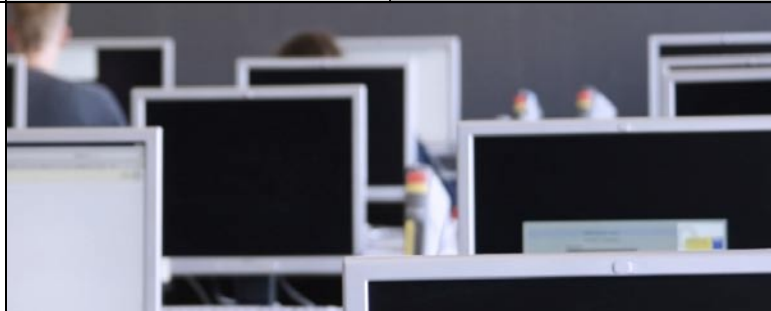


SECURITY TYPE <b>min. security</b>	BLDG. TYPE <b>police station</b>	BLDG. USE provide offices, lockers and armory for officers • holding cells for arrestees	SPECIAL FACILITIES <b>holding cells • armory • suspect phone room</b>	SQ. FOOTAGE <i>appx.</i> <b>4,400</b>
---------------------------------------	-------------------------------------	---	--	---



**BUILDINGS FOR CORRECTIONS**  
BY WHITLEY MANUFACTURING

- Police facilities (stations w/ holding cells)
- Temporary Correctional Housing
- Min. Security Permanent Buildings
- Medium Security Permanent Buildings
- Shower / Locker Facilities
- Expansions to Existing Facilities

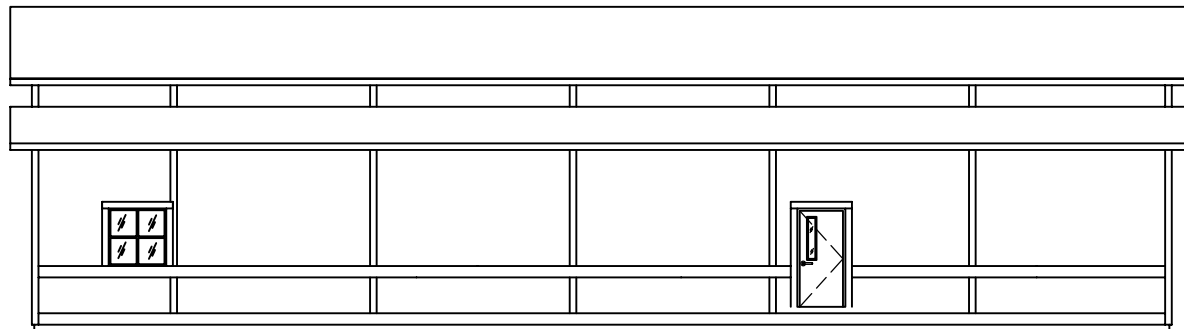
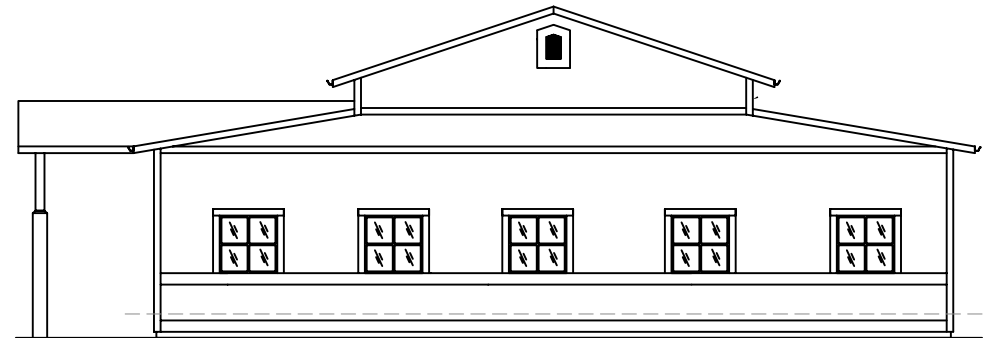
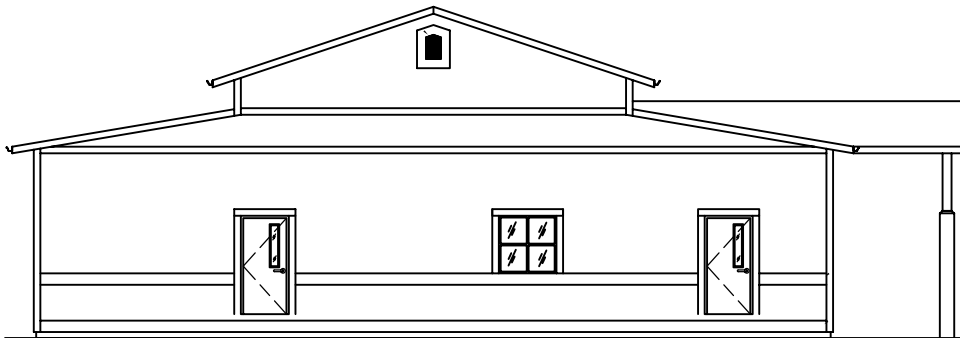
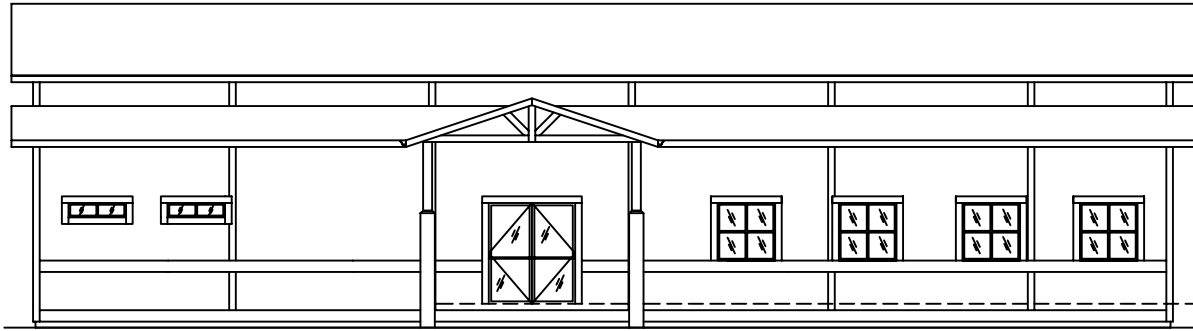
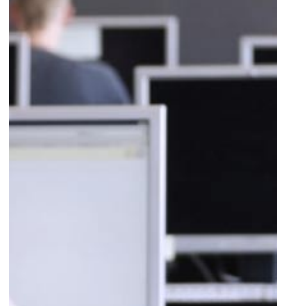


Images are for illustration purposes only and may depict optional or site-built features. Whitley Manufacturing can custom design your building to include any features and options that you desire. Plans and renderings are not to scale and are artist's interpretation only.

**BUILDINGS FOR  
CORRECTIONS**  
**BY WHITLEY  
MANUFACTURING**



- Temporary Housing Facility
- Police Facilities (holding cells)
- Minimum Security Permanent Buildings
- Maximum Security Permanent Buildings
- Shower / Restroom Facilities
- Expansions to Existing Facilities



**Exterior Elevations**

**Whitley Mfg. Co. Inc.**  
• South Whitley, Indiana  
• Rochester, Indiana  
• Marysville, Washington  
(260) 723-5131  
[www.whitleyman.com](http://www.whitleyman.com)