

OFFICES

**open**

RESTROOMS

**site-built**

INDUSTRY

**OFFICE /  
CONSTRUCTION**

SPECIAL FACILITIES

Designed and built to allow for relocation after a 10-15 year period.

SQ. FOOTAGE  
*appx.*

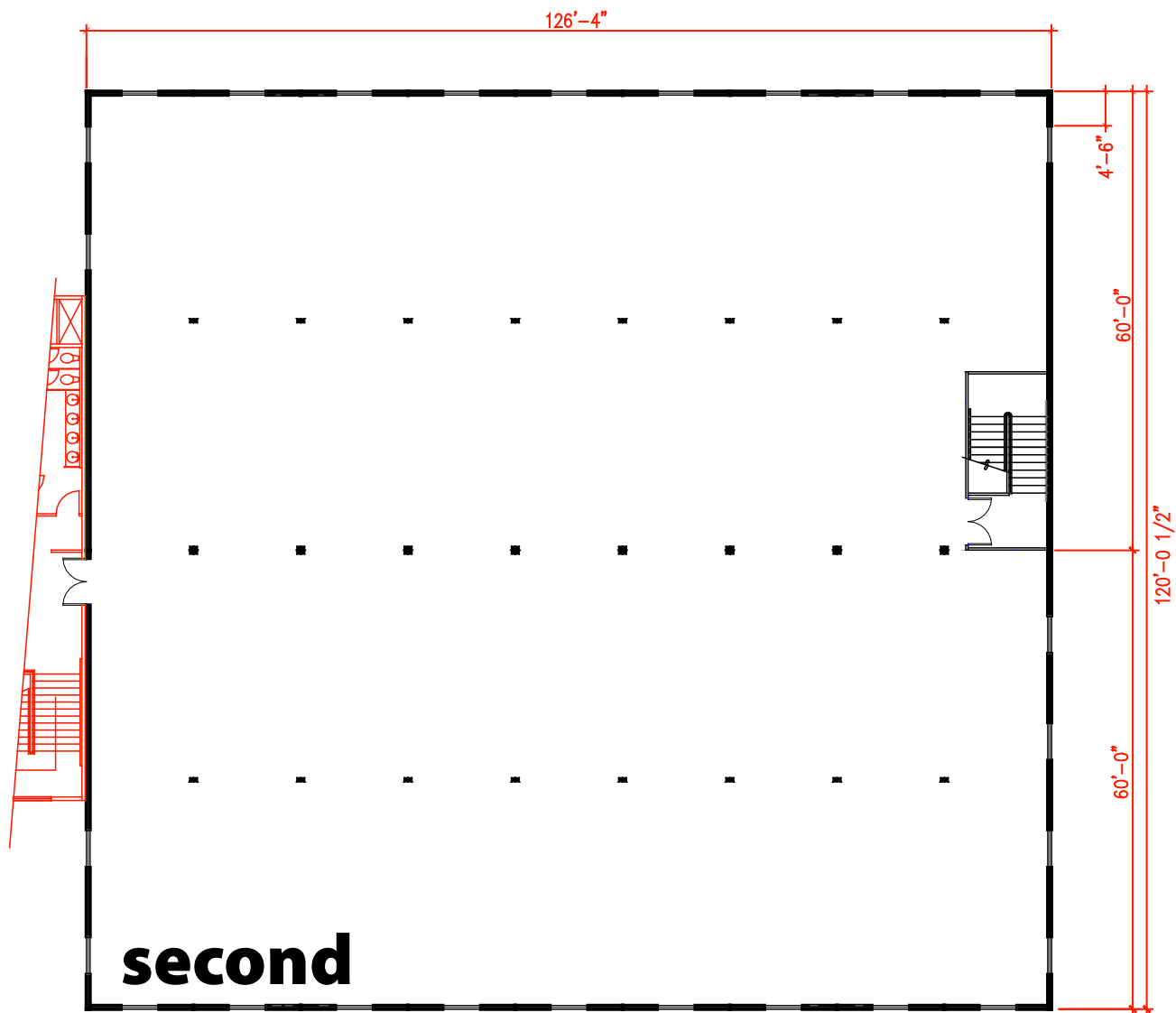
**30,000**



**OFFICE BUILDINGS**  
BY WHITLEY MANUFACTURING

- Permanent or Relocateable
- Available in non-combustible construction types
- Multiple-story designs





**Whitley Mfg. Co. Inc.**  
 • South Whitley, Indiana  
 • Rochester, Indiana  
 • Marysville, Washington  
 (260) 723-5131  
[www.whitleyman.com](http://www.whitleyman.com)