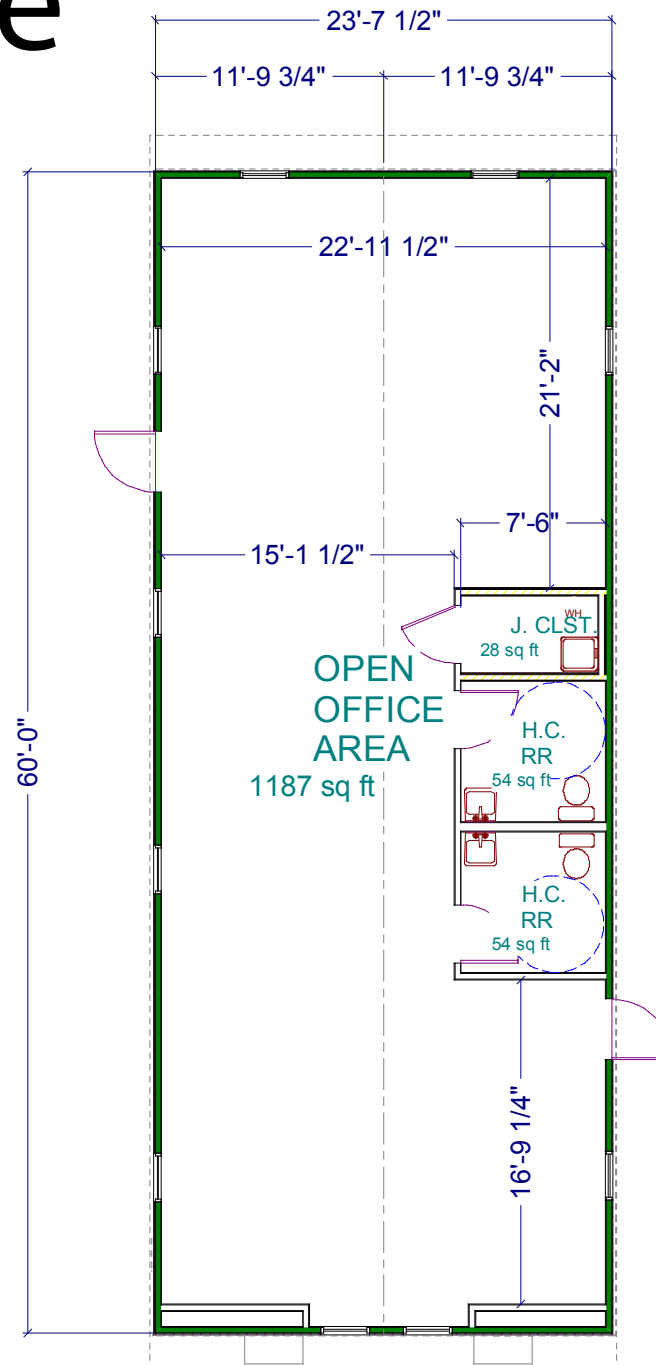


# clearspanone

## DESIGNED FOR:

- OFFICE USE
- EDUCATION / CLASSROOMS
- DAYCARE / CHILD DEVELOPMENT



Whitley Mfg. Co., Inc.  
South Whitley, IN // Rochester, IN  
Marysville, WA  
(260) 723-5131  
[www.whitleyman.com](http://www.whitleyman.com)

# clearspanone



Sample Exterior. Refer to Plan for Building Size & Layout.



## DESIGNED FOR:

- OFFICE USE
- EDUCATION / CLASSROOMS
- DAYCARE / CHILD DEVELOPMENT

Our Clearspan One design offers the flexibility of open space and the opportunity for a custom building layout. Our Clearspan buildings are available for rapid delivery, helping you adapt to changing markets and controlling construction costs with our economical modular construction system.

Clearspan One features 1,410 sq. ft. of space, 2 ADA single-occupant restrooms and a Janitor's closet.

The building is designed for use as office space, education / training / classrooms and daycare / child development.



**Whitley Mfg. Co., Inc.**

South Whitley, IN // Rochester, IN

Marysville, WA

(260) 723-5131

[www.whitleyman.com](http://www.whitleyman.com)