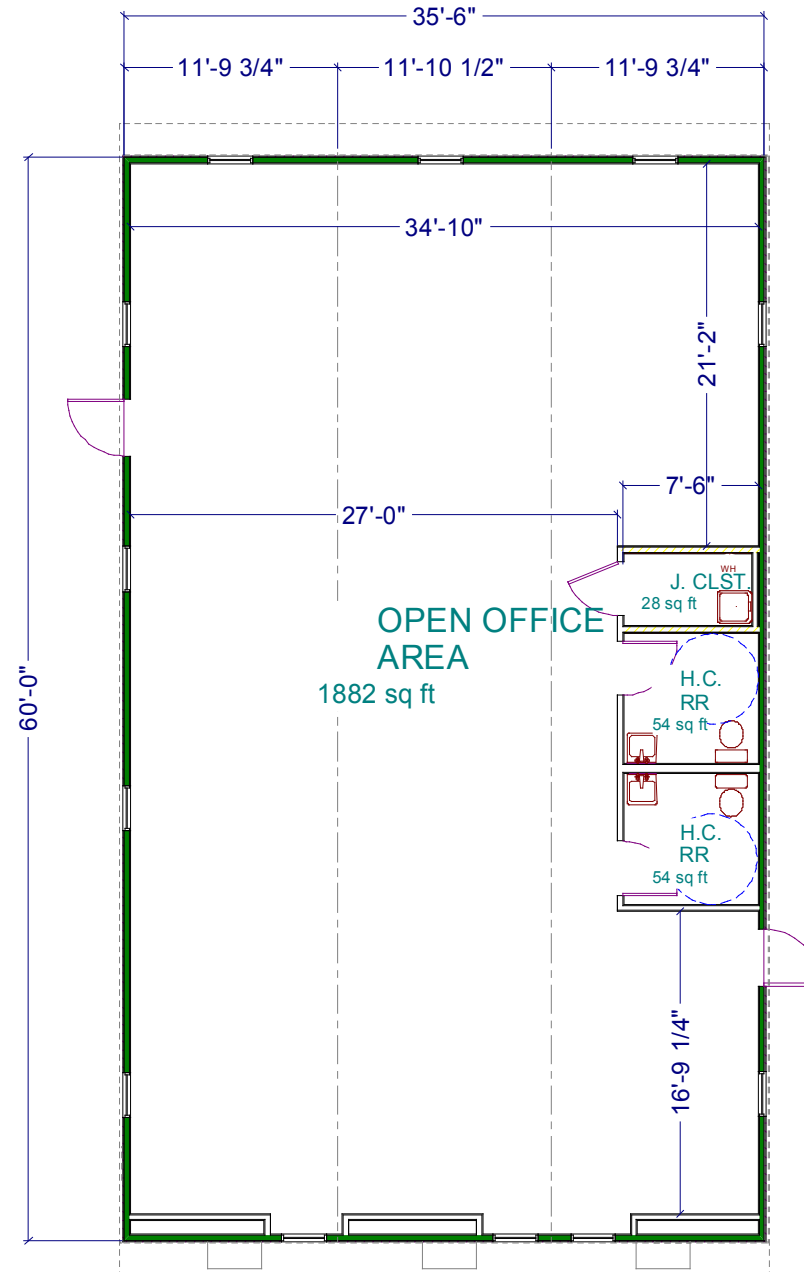


clearspan two

DESIGNED FOR:

- OFFICE USE
- EDUCATION / CLASSROOMS
- DAYCARE / CHILD DEVELOPMENT



Whitley Mfg. Co., Inc.
South Whitley, IN // Rochester, IN
Marysville, WA
(260) 723-5131
www.whitleyman.com

clearspan two



Sample Exterior. Refer to Plan for Building Size & Layout.

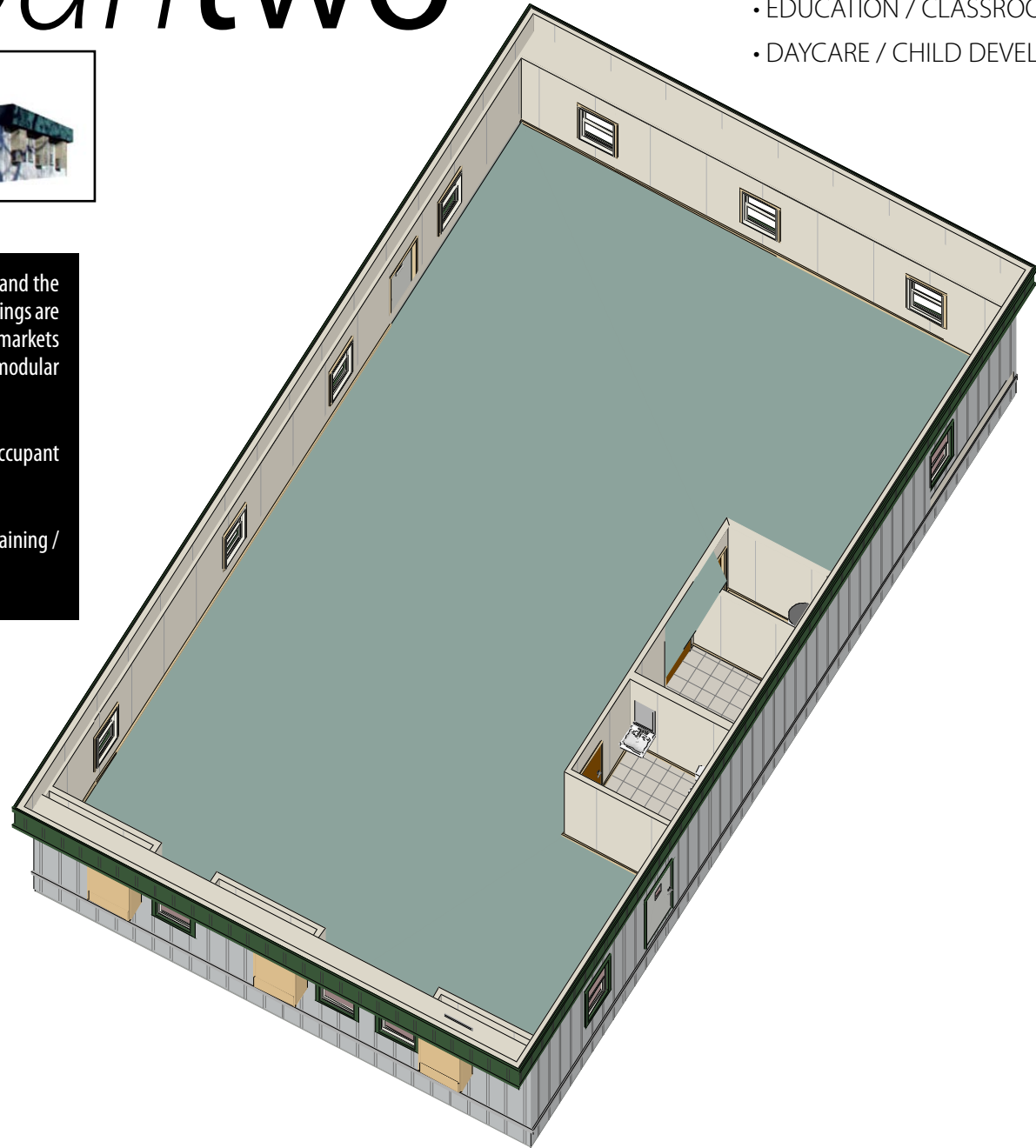
Our Clearspan Two design offers the flexibility of open space and the opportunity for a custom building layout. Our Clearspan buildings are available for rapid delivery, helping you adapt to changing markets and controlling construction costs with our economical modular construction system.

Clearspan Two features 2,115 sq. ft. of space, 2 ADA single-occupant restrooms and a Janitor's closet.

The building is designed for use as office space, education / training / classrooms and daycare / child development.

DESIGNED FOR:

- OFFICE USE
- EDUCATION / CLASSROOMS
- DAYCARE / CHILD DEVELOPMENT



Whitley Mfg. Co., Inc.

South Whitley, IN // Rochester, IN

Marysville, WA

(260) 723-5131

www.whitleyman.com