

# ADVANTAGES

## SHIPPING

The High-Ceiling Roof System folds into nearly flat sections for ease of shipment.

## FLEXIBILITY

Create buildings with ceiling heights up to 26'-0", up to 76'-0" clear width between support columns, spanning hundreds of feet in length.

## SPEED

Sections fold from flat to finished and are fastened in place within minutes. Even the largest structures can be set in place within hours.

## VERSATILITY

The High-Ceiling Clearspan system can be used to provide space in combination with standard modular units or as stand-alone structures.

## USES

**Cafeteria.** Offer wide open and spacious cafeteria and auditorium spaces. Could be used with schools, universities, or employee cafeterias.

**Gymnasium.** You can now offer your customers a turn-key school building using only modular units. Can attach seamlessly to modular shower / locker facilities.

**Warehouse.** Free-standing or attached warehouse space for the industrial sector, or in addition to modular office or laboratory space.

**Other.** Perfect for churches and Fire / EMT stations.

## THE WHITLEY ADVANTAGE

- Custom-Designed, Permanent Structures.
- Aesthetic Appeal.
- Accelerated Construction Timeline.
- Quick Return on Construction Investment.
- Controlled Costs.
- Flexibility for Future Growth.

## ABOUT WHITLEY MANUFACTURING

Our three facilities build custom modular buildings for a national clientele. Consistent labor rates & volume purchasing give us the ability to offer exceptional buildings that are also an exceptional value. Plus our construction system reduces timelines & overruns.

South Whitley, IN  
Rochester, IN  
Marysville, WA



Whitley Manufacturing Co. Inc.  
201 W. First St. • South Whitley, IN • 46787  
Phone • (260) 723-5131 • Fax • (260) 723-6949

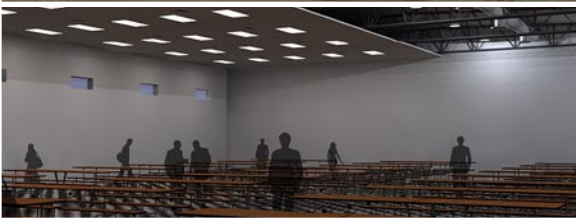
[www.whitleyman.com](http://www.whitleyman.com)

W H I T L E Y M A N U F A C T U R I N G

high-ceiling  
clearspan  
(patent pending)



# FINISHED BUILDINGS



THE NEXT STEP IN THE  
**EVOLUTION**  
OF MODULAR CONSTRUCTION  
available exclusively from **whitley manufacturing**

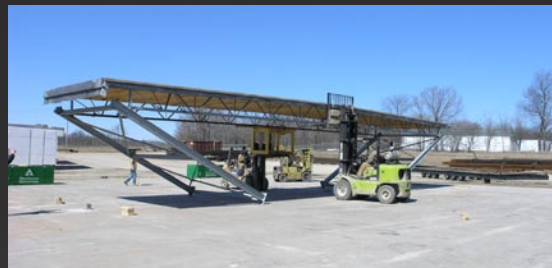
# PROCESS



STEP ONE



STEP TWO



STEP THREE



STEP FOUR



STEP FIVE



STEP SIX

## Dimensions

TOP

Up to 76' clear

Clearspans of hundreds of feet as needed.

SIDE

Up to 76' clear

26' Ceiling Height