



EVANS-KIMMEL HALL



Location Fort Wayne, Indiana

Partners Design Collaborative
Architecture / Design Firm

Type Permanent Dormitory Facility

Size Total Structure:

Client Indiana Institute of Technology serves over 4,000 students from around the world. The school, located in downtown Fort Wayne, IN, is known for programs in mathematics, engineering and science, but offers a well-regarded liberal arts program as well. In the past decade, the school has undergone rapid growth.

Their Need The school's continued growth meant that they needed to expand aggressively to continue providing housing services to their students. Budget, timeline and aesthetics were all factors in their decision.

Our Solution In 2004, Indiana Tech had hired Whitley to construct the three story Rogers-Yergens Hall. The accelerated pace of modular construction delivered a building in a fraction of the time, allowing the school to offer new housing that Fall, rather than the next.

A similar situation occurred with Evans-Kimmel Hall. Whitley Manufacturing was able to build, set and finish the Design Collaborative planned four-story building over the school's summer recess, offering them an additional semester of revenue and a new housing facility to attract students. The building features a modern design and offers the semi-private living space that today's student demands.



Planning Phase. Architectural Design by Design Collaborative & Engineering work by Whitley Mfg.

STEP ONE

Site development and foundations begin at the project site. Concurrently, construction of the modules is begun off-site at Whitley Manufacturing's construction facilities.

STEP TWO

Building sections are transported to site and set. University disruption is minimal as work takes place over the summer.

STEP THREE

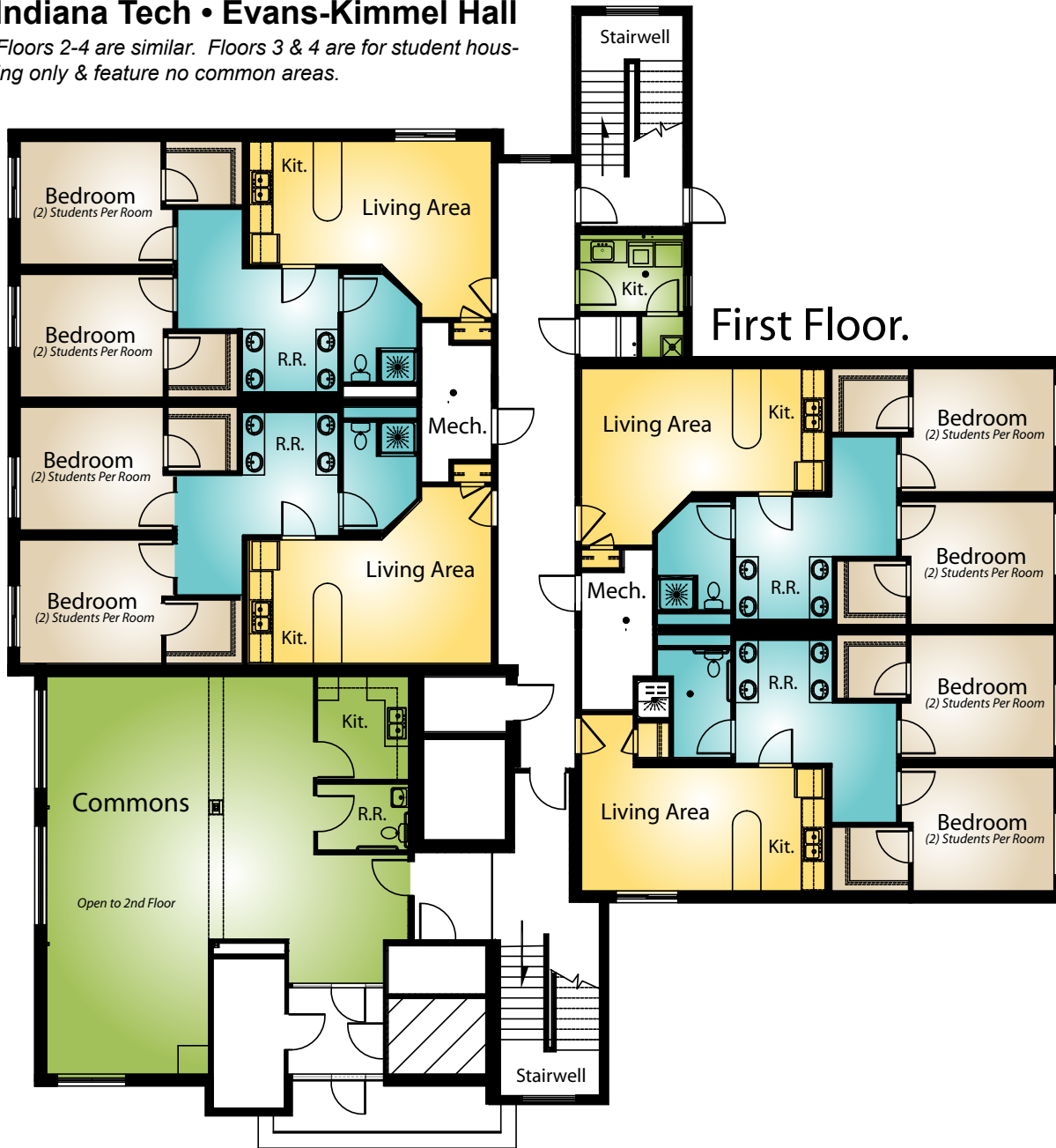
Building is finished. The school has a completed dormitory building prepared for Fall Semester.

STEP FOUR

STEP FIVE

Indiana Tech • Evans-Kimmel Hall

Floors 2-4 are similar. Floors 3 & 4 are for student housing only & feature no common areas.



Whitley Mfg. Co., Inc.
 South Whitley, IN // Rochester, IN
 Marysville, WA
 (260) 723-5131
www.whitleyman.com

FEATURES

The dormitory features a semi-private design that offers the social interaction of dormitory life with the conveniences of apartment living.

The four-story building features a two-story commons area for student relaxation and socialization.

The building's design brings modernity to the campus while still referencing the other structures through the use of common materials.

The structure was set in a matter of days, allowing the site to quickly become weathertight and secure.

By constructing the majority of the structure off-site, the campus was spared the disruption and danger of a large scale construction project.

By utilizing modern building techniques and completing site-work and building construction concurrently, Whitley Mfg. can cut typical construction timelines by 30-50% depending on the project - delivering a rapid return on construction investment.