

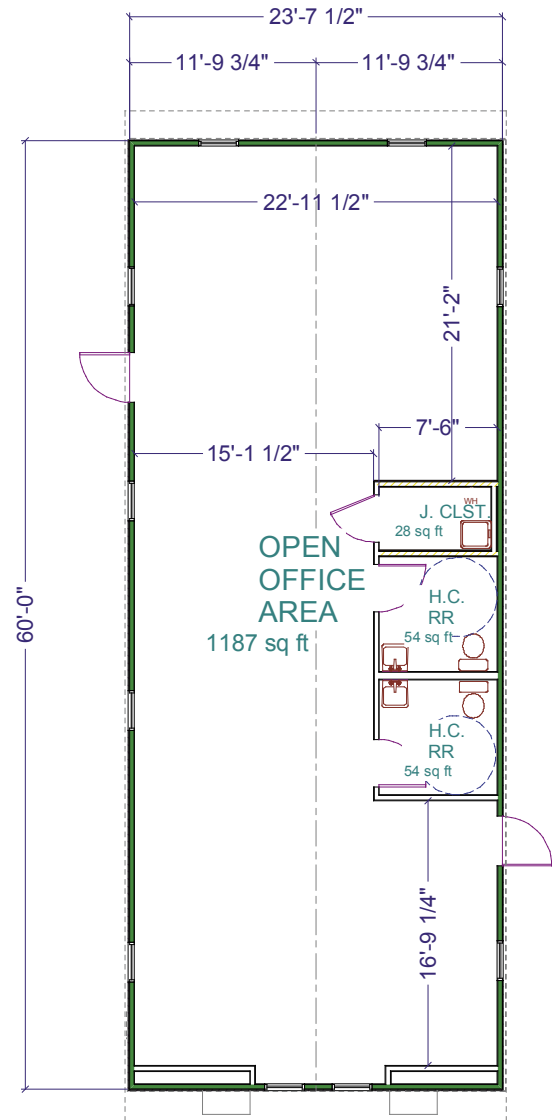
# clearspan



Whitley Mfg. Co., Inc.  
 South Whitley, IN // Rochester, IN  
 Marysville, WA  
 (260) 723-5131  
 www.whitleyman.com

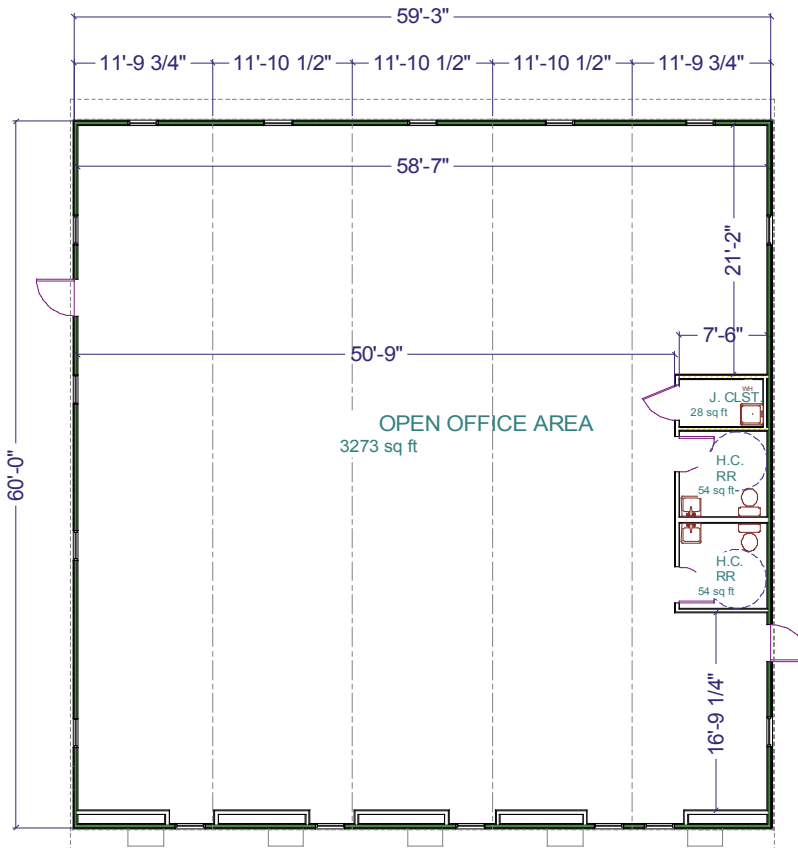


**ClearspanTwo.** 2,115 square feet.



**ClearspanOne.** 1,410 square feet.

**AVAILABLE FOR IMMEDIATE DELIVERY!**

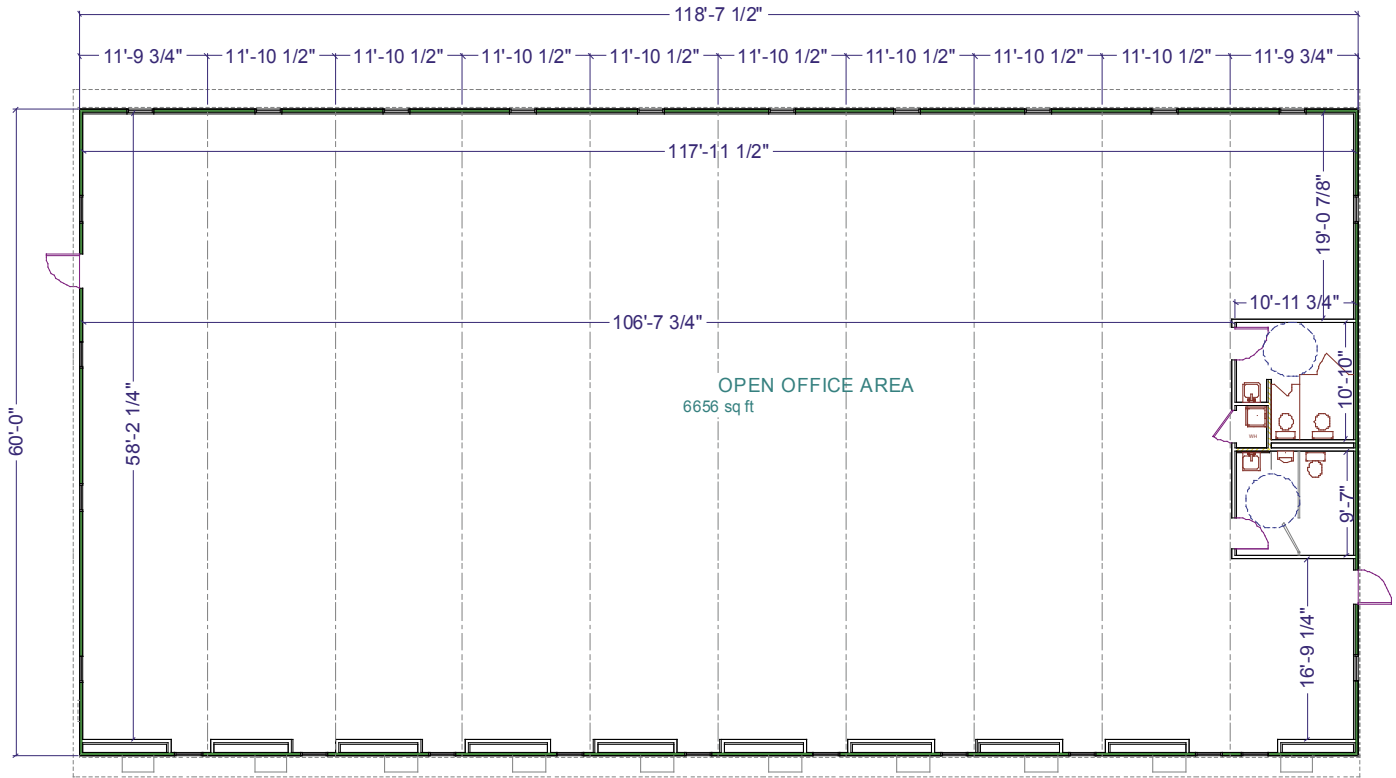


**ClearspanThree.** 3,525 square feet.

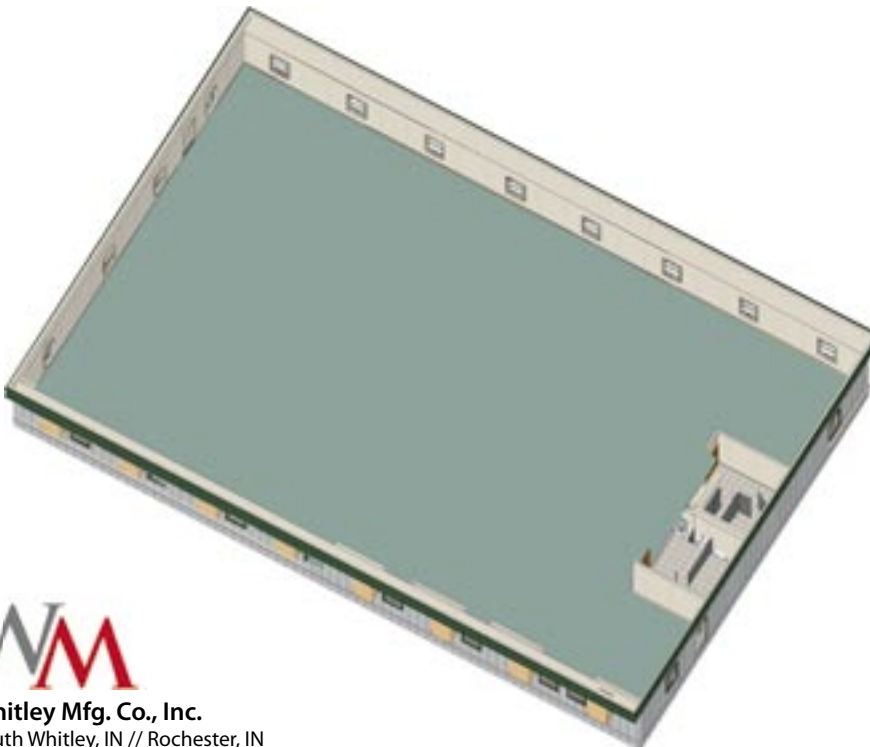
## SPECIFICATIONS

- (23) different state seals and / or code compliance.
- Clearspan construction w/out exposed support columns.
- Fully-adhered EPDM roof.
- Vinyl gypsum interior.
- Duratemp T-1-11 exterior w/ mansard.
- 36 x 80 steel exterior doors w/ steel frames.
- 32 x 60 DIG bronze alum. single-hung windows.
- Installed suspended ceiling w/ lay-in lights + HVAC diffusers.
- No floorcoverings / base molding installed (except at restrooms).

# clearspan



**ClearspanSix.** 7,050 square feet.



**ClearspanFour.** 5,640 square feet.

**AVAILABLE FOR IMMEDIATE DELIVERY!**



**Whitley Mfg. Co., Inc.**  
South Whitley, IN // Rochester, IN  
Marysville, WA  
(260) 723-5131  
[www.whitleyman.com](http://www.whitleyman.com)

## CLEARSPAN

- Designed for use as office space, education, or child care.
- A variety of sizes with and without restrooms are available for immediate delivery.
- Our clearspan design offers you the flexibility to meet your customers' floorplan needs in a fraction of the time and offer outstanding value.

Learn more at:  
[www.whitleyman.com/inventory/](http://www.whitleyman.com/inventory/)

**Contact  
Larry High  
For Details.**

**(260) 723-5131**