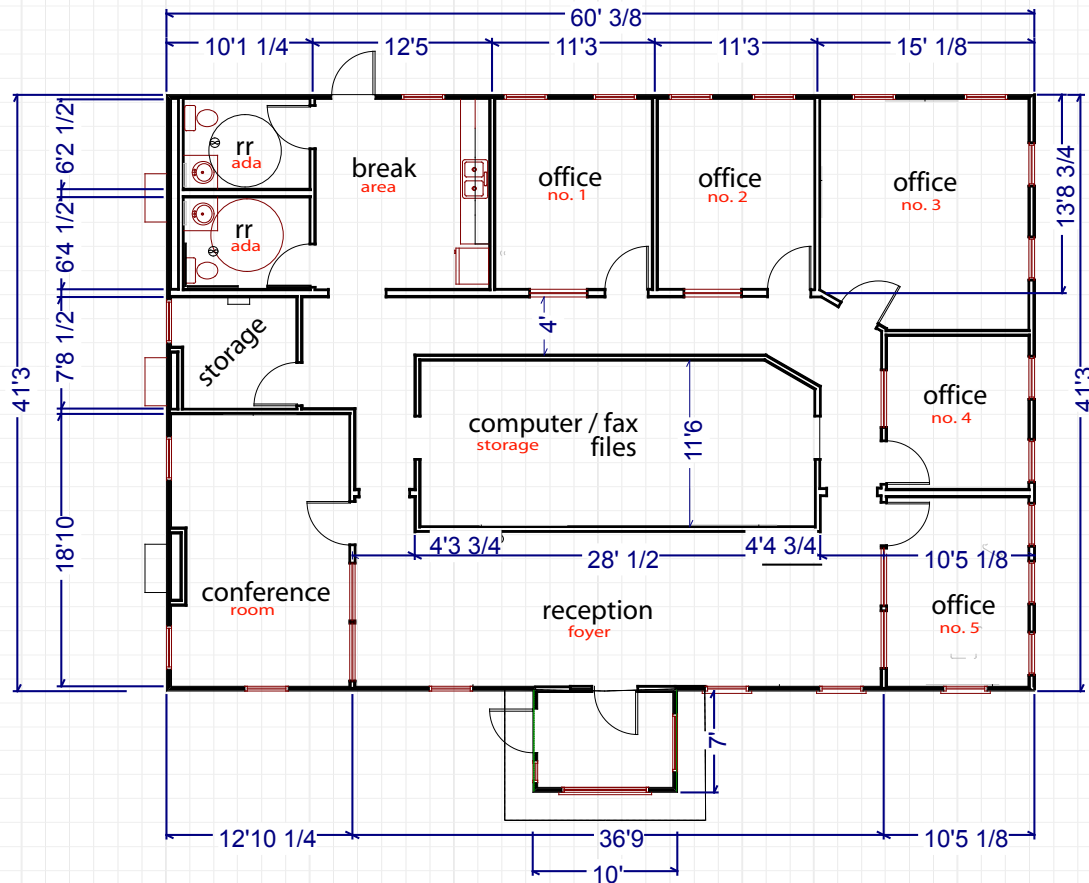


# Enterprise series



## FLEXIBLE OFFICE SPACE

BY WHITLEY MANUFACTURING  
ENTERPRISE SERIES PLAN 2



OFFICES

**5** private + open space

RESTROOMS

**2**

EXT. DIMENSION

*appx.*

**60'-0" x 41'-3"**

SPECIAL FEATURES

• Computer / Printer / Records Room •

SQ. FOOTAGE

*appx.*

**2,500**



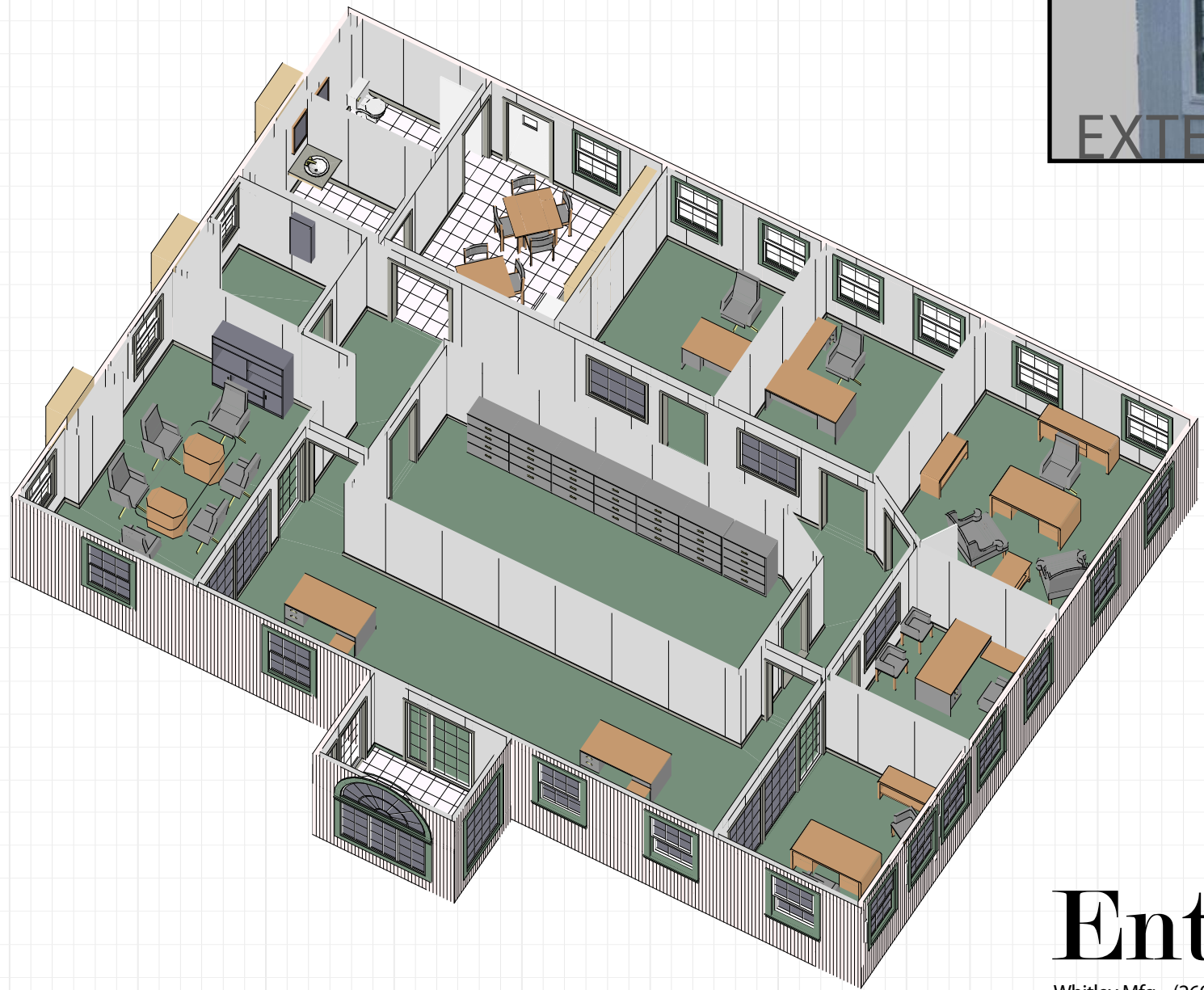
[www.whitleyman.com](http://www.whitleyman.com)

SOUTH WHITLEY, IN • ROCHESTER, IN • MARYSVILLE, WA

WHITLEY MANUFACTURING

- Innovative design & materials for office space.
- Maximize productivity by minimizing construction timelines.
- Durable finishes allow for easy maintenance.
- Flexibility for future expansion and / or relocation.

# BENEFITS



*NOTE: Some site-built elements may be shown.  
These are constructed on-site by others.*