

Fire House & Community Center

Location: Browns Hills, New Jersey
Project size: 7,374 sq. ft.
Days to completion: 95
Number of modules: 10



The Challenge

Function + Design

First Responders are a crucial resource to any community to ensure safety and peace of mind. Presidential Lakes located in Browns Hills, New Jersey reached out to Whitley, and Modular Genius to create a fire house and community center that would blend well architecturally with its wooded surroundings, and provide fire fighting crews an efficient and effective work place to ensure safety within the community.



The Solution

Reduced timelines + Innovative engineering

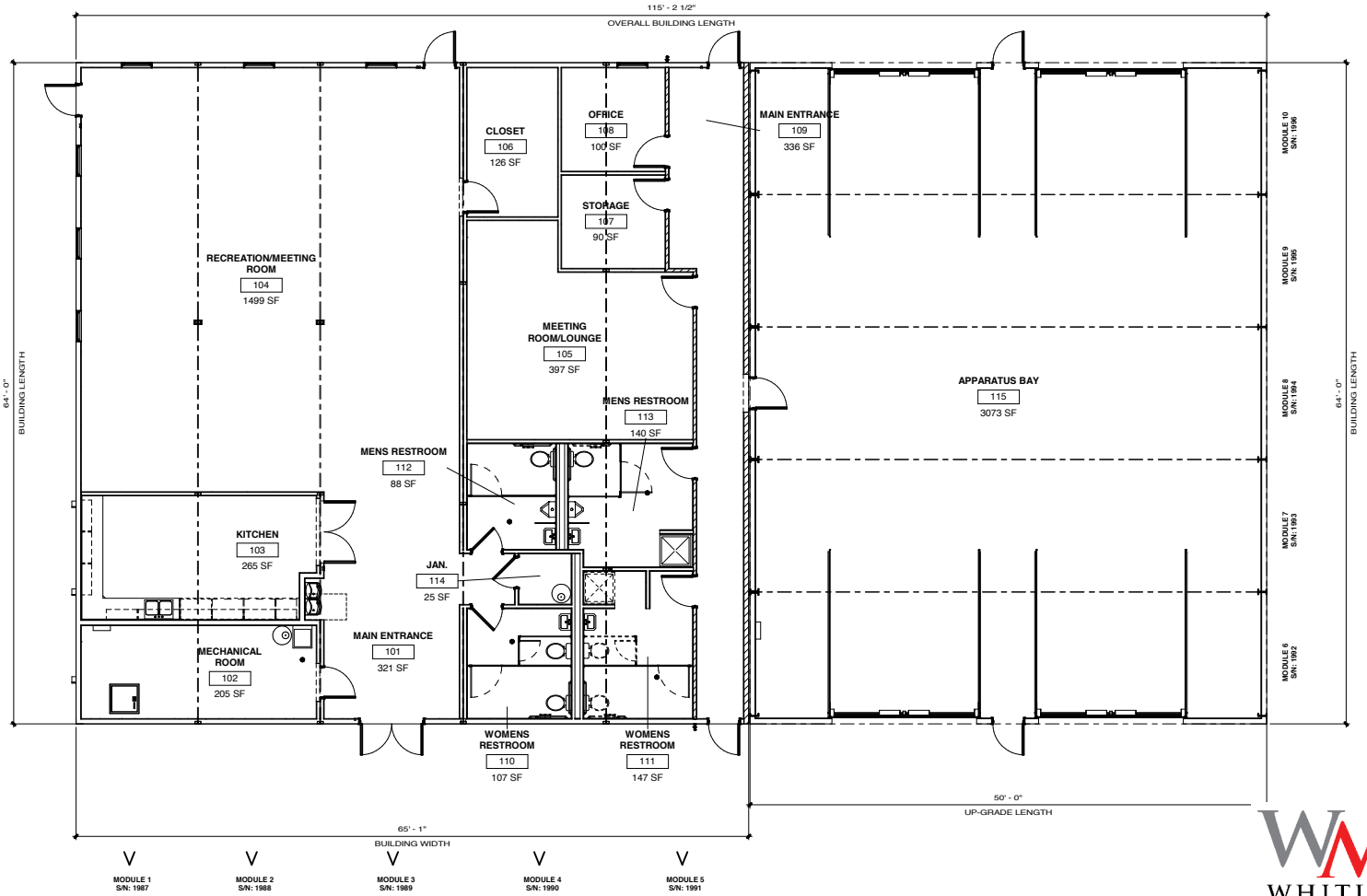
Using off-site modular construction, the township was able to achieve the desired layout and look of the exterior in roughly half the time it would have taken onsite construction. Additional monetary and time savings were provided by utilizing Whitley's UpGrade Clear Span system Modular enabling reduced foundation costs for the apparatus bay ; while also producing two and a half times less waste in the overall construction labor and materials.



Serving you nationwide
South Whitley, IN | Marysville, WA | Leola, PA | Rochester, IN

260-723-5131
www.whitleyman.com

Presidential Lakes Fire House



Serving you nationwide
 South Whitley, IN | Marysville, WA | Leola, PA | Rochester, IN

260-723-5131
www.whitleyman.com