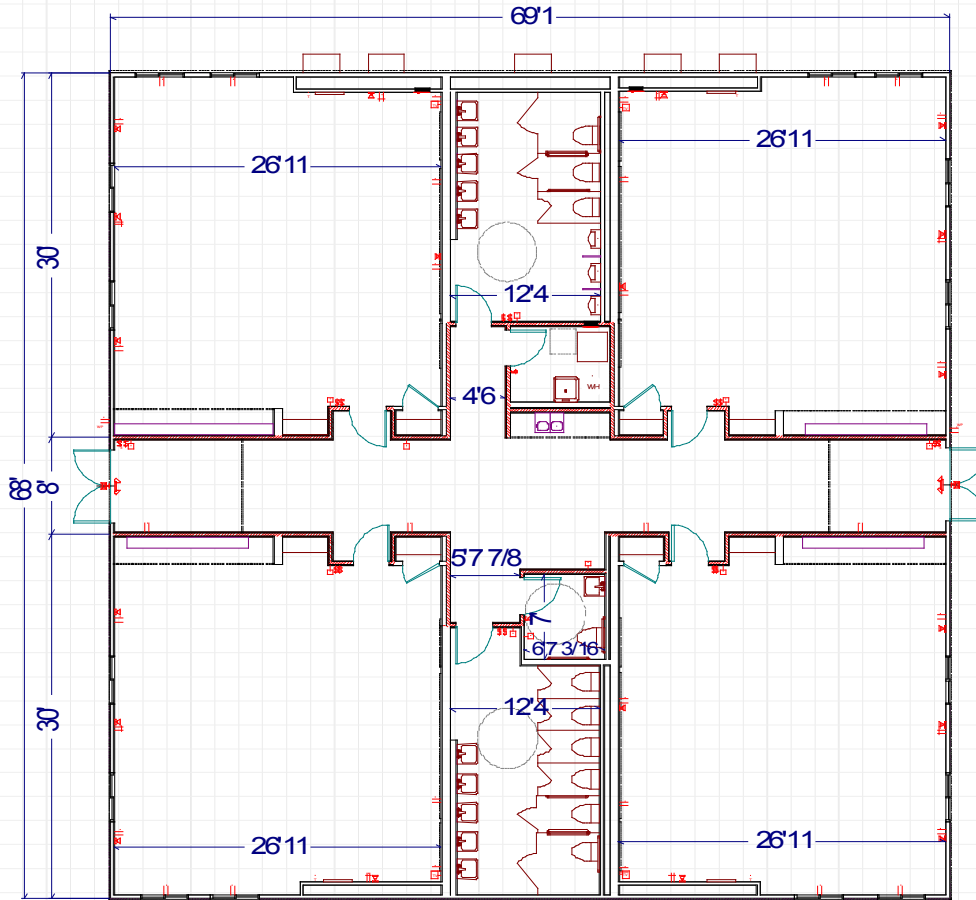


A R I S T O T L E + 4 • C L A S S

W H I T L E Y M A N U F A C T U R I N G



CLASSROOMS

4

RESTROOMS

2

•single occupant

EXT. DIMENSION

nominal

70 x 68

STUDENT LOAD

appx.

100

SQ. FOOTAGE

appx.

4,760



BUILDINGS FOR EDUCATION

BY WHITLEY MANUFACTURING

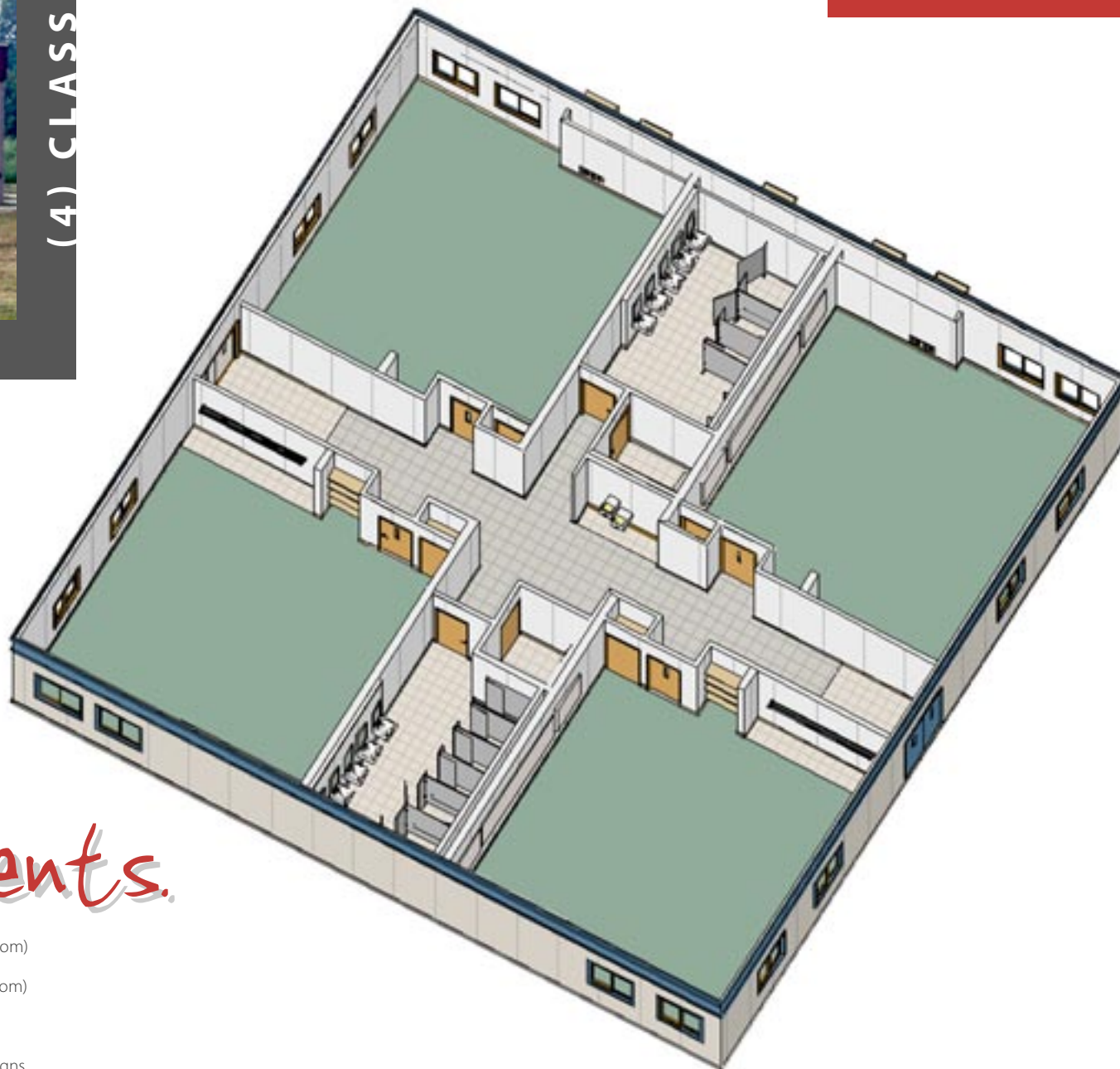
- Relocatable Classroom Buildings
- School Expansions
- Custom, Permanent Schools
- Press Boxes
- Shower & Locker Buildings / Restrooms
- Concessions Facilities





ARISTOTLE PLUS+

(4) CLASSROOMS



Whitley Mfg. Co. Inc.

- South Whitley, Indiana
 - Rochester, Indiana
 - Marysville, Washington
- (260) 723-5131
www.whitleyman.com

Just add students.

Whitley Manufacturing's line of classroom systems are designed to provide flexible space to educators.

Our building system can deliver structures of the utmost quality in a fraction of the time. The process is designed with ease in mind. Choose your plan and specifications...then just add students!

- Socrates (2-classroom)
- Socrates + (larger 2-classroom)
- Aristotle (4-classroom)
- Aristotle + (larger 4-classroom)
- Pythagoras (6-classroom)
- Plato (8-classroom)
- Cicero (12 classroom)
- Contact us for custom designs.