

| | | | | |
|------------|-----------|------------|---------------------------------------|------------------------------|
| EXAM ROOMS | RESTROOMS | DOCTORS | SPECIAL FACILITIES | SQ. FOOTAGE |
| 4 | 2 | 1-2 | Spacious Lobby • Nurse's Station • | <i>appx.</i> 1,600 |



BUILDINGS FOR THE MEDICAL FIELD

BY WHITLEY MANUFACTURING

- **Medical.** Flexible, efficient clinic and office space for the medical field.
- **Dental.** Flexible, efficient space for a dental practice.
- **Imaging.** The latest in M.R.I. technology in a fraction of the time and with the flexibility of modular.
- **Dialysis.** Renal treatment facilities with the flexibility and value of Whitley Mfg. Medical Bldgs.



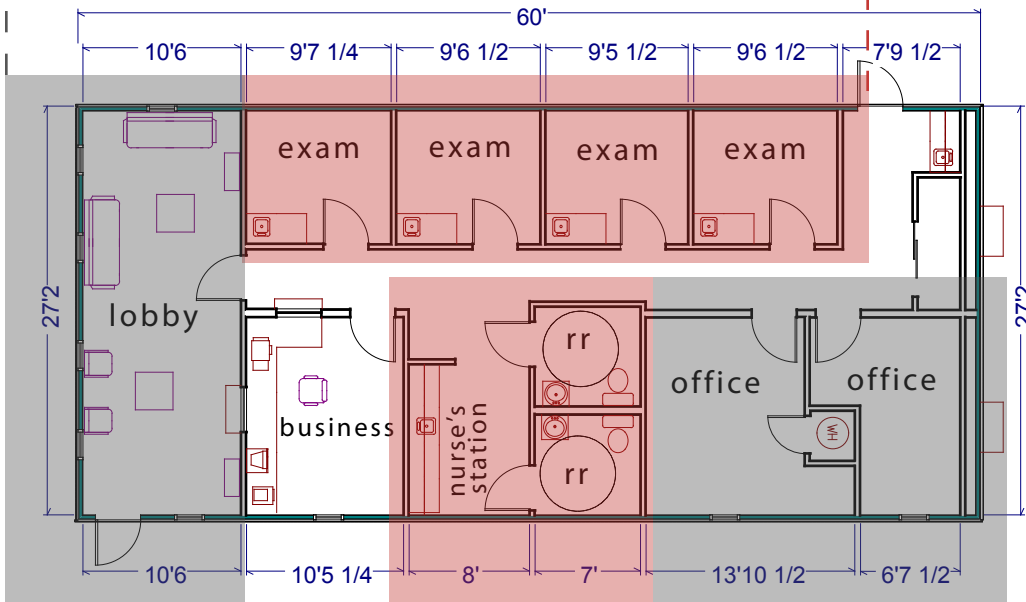
www.whitleyman.com

Spacious Lobby

- Spacious Lobby area offers appx. 270 square feet of waiting area.
- Pass-through window offers access to reception / business office area.

Exam Rooms

- Suite of (4) private exam rooms.
- Each room is outfitted with:
 - Commercial-grade laminate cabinets.
 - Countertop space.
 - Sink.



Private Restrooms

- Separate facilities for staff and patients.
- Single occupant design offers privacy.
- Handicapped accessible & ADA-compliant.

Private Offices

- This pair of private offices can serve as space for:
 - Two physicians, or,
 - One physician and a Nurse Practitioner.

The photograph shown above is one of many different aesthetic styles available for the **Medical One** Medical Building. Finishes and amenities will be custom selected to complement your individual project.

Whitley Mfg. Co. Inc.

- South Whitley, Indiana
 - Rochester, Indiana
 - Marysville, Washington
- (260) 723-5131

www.whitleyman.com