

EXAM STATIONS	RESTROOMS	DENTISTS	SPECIAL FACILITIES	SQ. FOOTAGE
<b>6</b>	<b>2</b>	<b>1-2</b>	Dark Rm • Laboratory	<i>appx.</i> <b>2,100</b>



## BUILDINGS FOR THE MEDICAL FIELD

BY WHITLEY MANUFACTURING

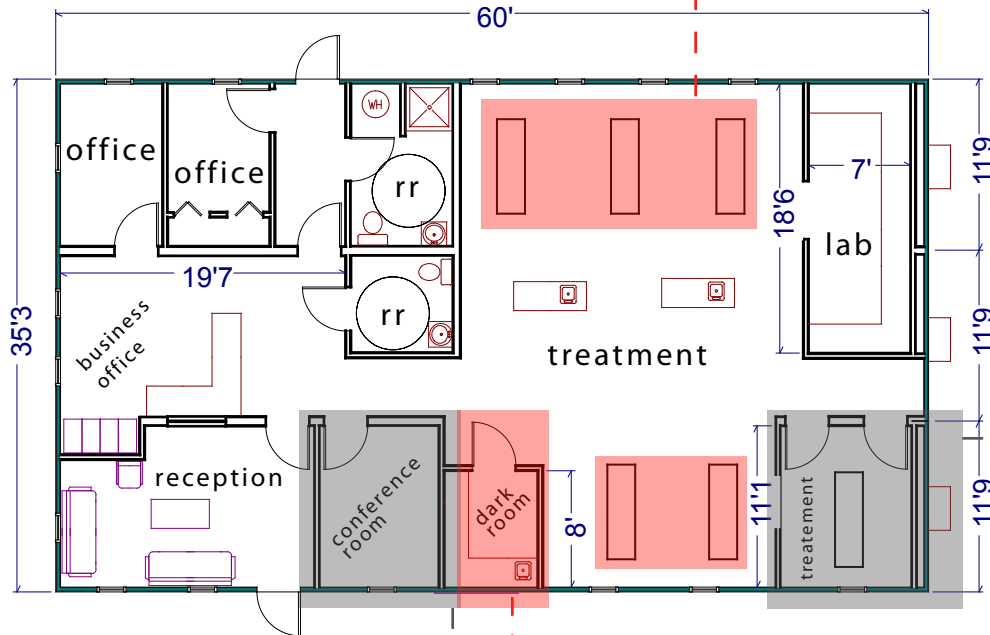
- **Medical.** Flexible, efficient clinic and office space for the medical field.
- **Dental.** Flexible, efficient space for a dental practice.
- **Imaging.** The latest in M.R.I. technology in a fraction of the time and with the flexibility of modular.
- **Dialysis.** Renal treatment facilities with the flexibility and value of Whitley Mfg. Medical Bldgs.



www.whitleyman.com

## Treatment Area

- Large central treatment area.
- Accommodates (6) dental stations.
- Includes centrally located sink units.



## Private Treatment Space

- Conduct surgical procedures in a private setting with this isolated room.

## Dark Room

- DDSpace is engineered to include the unique facilities required by a dental practice.

## Conference Room

- Conveniently located and perfect for staff meetings.
- Could also be used for private, patient consultations.



The photograph shown above is one of many different aesthetic styles available for the **Dental One** Dental Building. Finishes and amenities will be custom selected to complement your individual project.

## **Whitley Mfg. Co. Inc.**

- South Whitley, Indiana
  - Rochester, Indiana
  - Marysville, Washington
- (260) 723-5131**

[www.whitleyman.com](http://www.whitleyman.com)